

DRAWING NUMBER
23-237

LOXAHATCHEE GARDENS

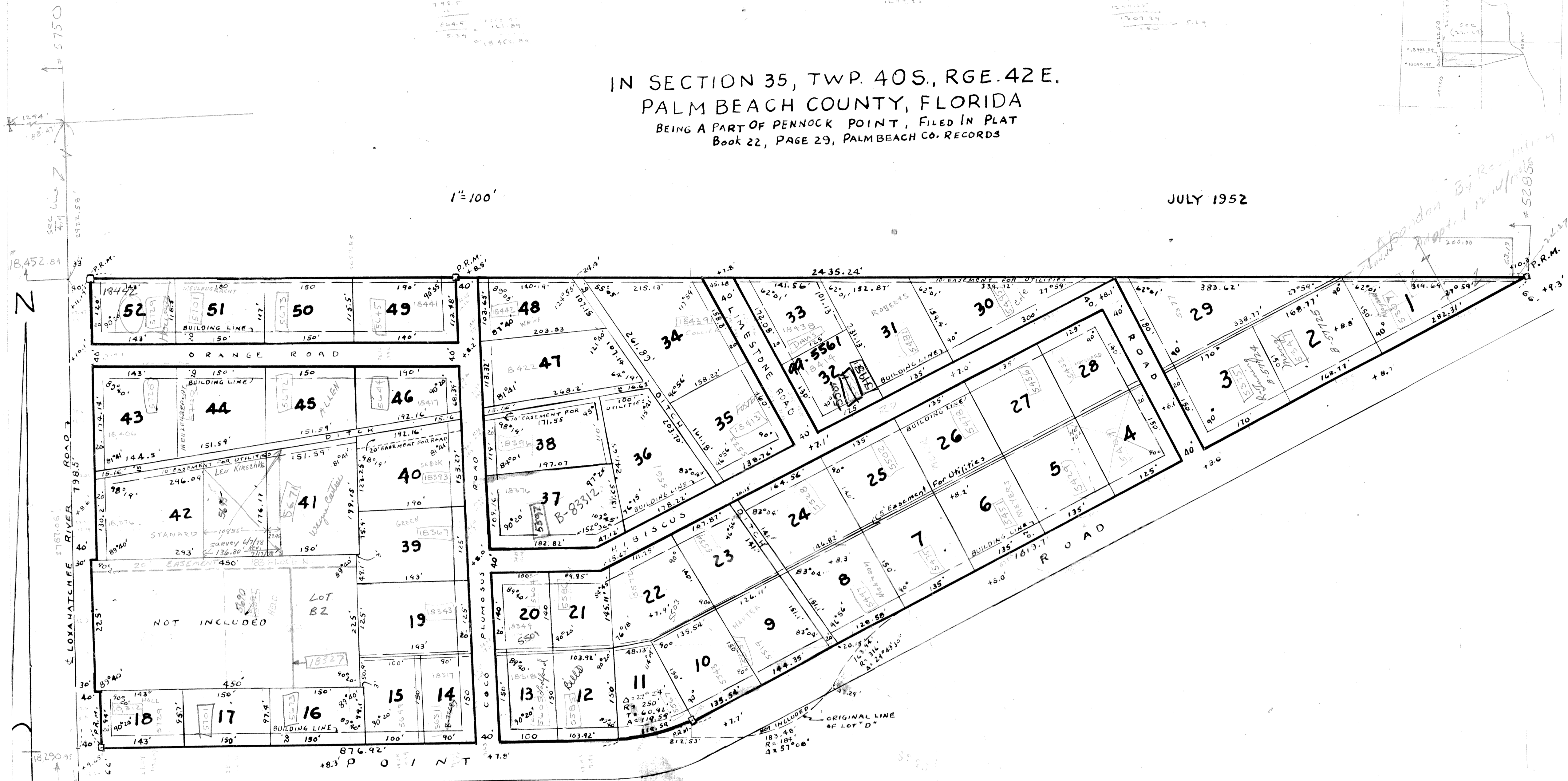
237

IN SECTION 35, TWP. 40S., RGE. 42E.
PALM BEACH COUNTY, FLORIDA
BEING A PART OF PENNOCK POINT, FILED IN PLAT
Book 22, PAGE 29, PALM BEACH CO. RECORDS

STATE OF FLORIDA }
COUNTY OF PALM BEACH }
This Plat was filed for record at 9:45
this 29 day of JULY
1952, and duly recorded in Plat Book
52 on page 237
ALEX ARNETTE, Clerk Circuit Court
Maryjorie L. Rose, D.

1"=100'

JULY 1952



NOTE: Elevations are shown thus (+9.31')
and refer to U.S.C. & G.S. Datum.

STATE OF FLORIDA SS
COUNTY OF PALM BEACH

KNOW ALL MEN BY THESE PRESENTS, That SHIRLEY P. FLOYD, a single woman
the owner in fee simple of a tract of land in Section 35, Township 40 South, Range 42 East, Palm
Beach County, Florida, described as:
Part of Tract "D" of the plat of PENNOCK POINT as filed in
Plat Book 22, at Page 29, Public Records of Palm Beach County, Florida.

has caused the same to be surveyed and platted as shown hereon and
hereby dedicates to the public all roads and right-of-way of the ditches shown hereon,
reserving however unto herself, her heirs, successors, assigns and legal representatives
the reversion or reversions, thereof, whenever abandoned by the public or discontinued by
law.

IN WITNESS WHEREOF, she has hereunto set her hand and seal this 23rd
day of July, A.D., 1952.

Witness: Lawrence J. ...
Witness: ...

Approved: 28 July, A.D., 1952.
Board of County Commissioners

By: ...
Chairman

By: ...

STATE OF FLORIDA SS
COUNTY OF PALM BEACH

I HEREBY CERTIFY, That on this day, personally, appeared before
me, an officer duly authorized to administer oaths and take acknowledgments SHIRLEY
P. FLOYD, to me well known, and known by me to be the person described in and who
executed the foregoing dedication, and she acknowledged before me that she executed
the same, freely and voluntarily for the purpose therein expressed.

WITNESS my hand and official seal at West Palm Beach, Fla.,
this 23rd day of July, A.D. 1952.

My Commission Expires: October 22nd, 1955

Laura B. Jenkins
Notary Public

1000-583

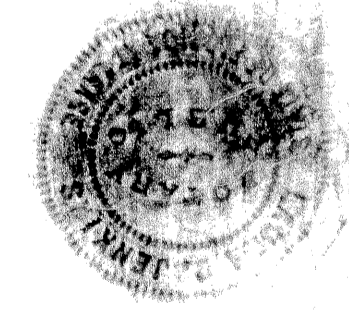
STATE OF FLORIDA SS
COUNTY OF PALM BEACH

I HEREBY CERTIFY, that the plat shown hereon as "LOXAHATCHEE
GARDENS" is a true and correct representation of a survey made under my direction, and
that said plat is accurate to the best of my knowledge and belief, and that permanent
reference monuments (P.R.M.) have been placed as required by law.

July, A.D., 1952.

My Commission Expires: October 22nd, 1955

August Ludwig
Registered Land Surveyor
Florida Certificate No. 187.
Laura B. Jenkins
Notary Public



23
237